

# Structured Cabling Schematic

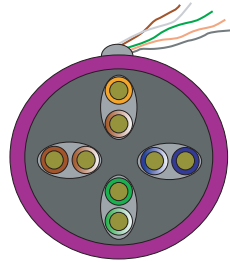
## A Stranded and Solid Core Category 5E UTP Cable Cross-section

The following pages are examples of product applications within LAN/WAN network schematics.

UTP straight through cable used to connect comms equipment to P.C.'s.

TIA/EIA 568B Wiring

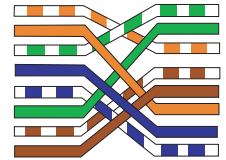
|   |  |                  |
|---|--|------------------|
| 1 |  | White and Orange |
| 2 |  | Orange           |
| 3 |  | White and Green  |
| 4 |  | Blue             |
| 5 |  | White and Blue   |
| 6 |  | Green            |
| 7 |  | White and Brown  |
| 8 |  | Brown            |



UTP Patch Cable Cross Section

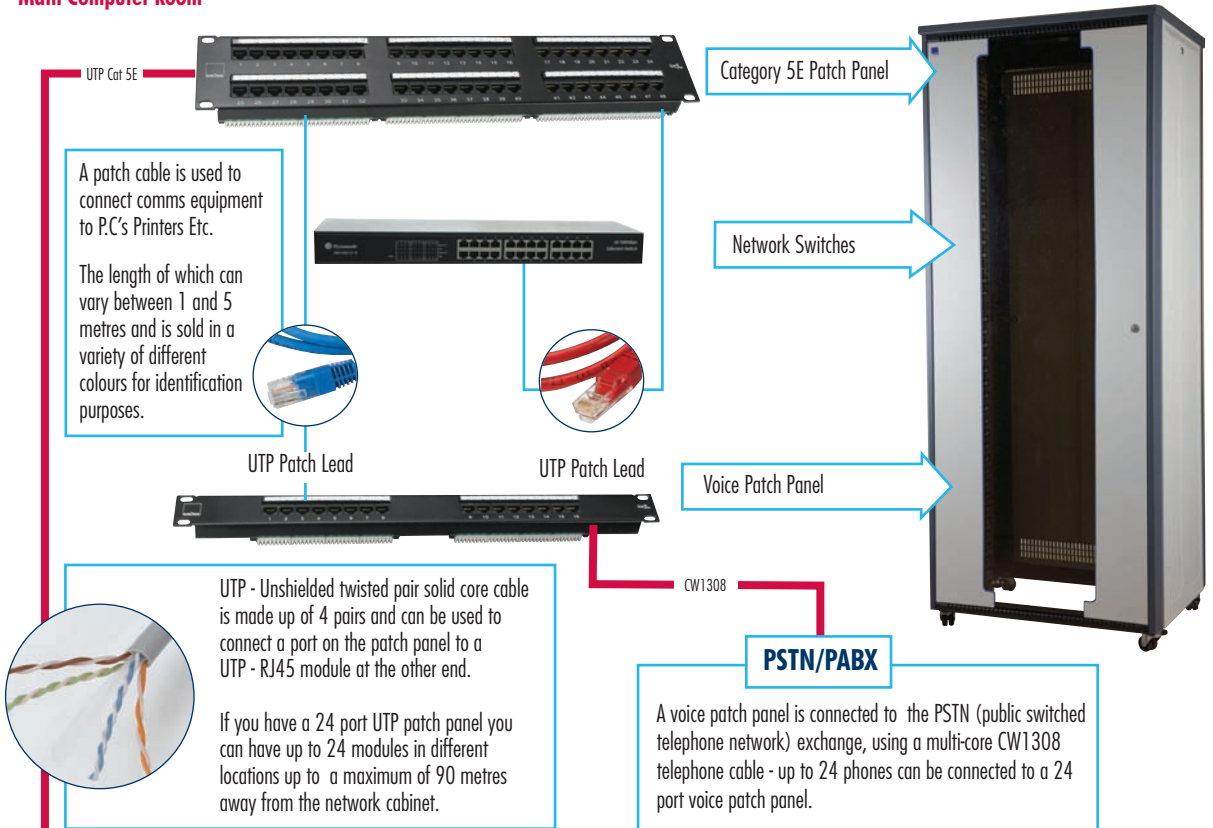
UTP crossed wiring cable used to connect different types of comms equipment together.

TIA/EIA 568B Crossed Wiring



## Structured Cabling and UTP - Unshielded Twisted Pair

### Main Computer Room



### UTP Outlets Located in Office

